

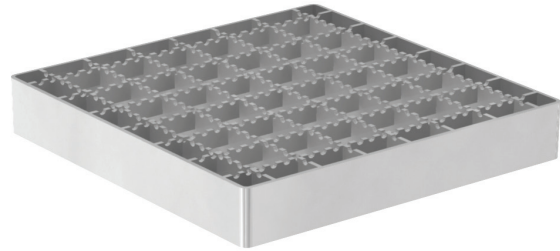
## ACO GULLY 157 – Grates

Part No.  
408190

ACO Gully 157 Mesh slip resistant grate, load class L15, grade 316 stainless steel

### Product Features

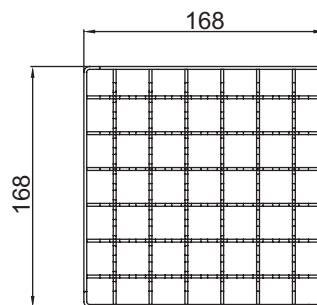
1. Load Class L15 (EN 1253), similar to class A10kN (AS 3996)
2. AS 3996 (Clause 3.3.5) compliant for surface openings in pedestrian areas
3. Slip resistant
4. Manufactured from grade 316 stainless steel
5. Hydraulic data
  - 22,820mm<sup>2</sup> intake area



### Specification Clause

The Mesh slip resistant grate shall be to suit ACO Gully 157 (Part No. 408190). The grate shall be Load Class L15 (EN 1253), similar to Class A10kN (AS 3996).

The grate shall be manufactured from grade 316 stainless steel and compliant with AS 3996 Surface openings in pedestrian areas.



#### ACO Polycrete Pty Ltd, Australia

Ph: 1300 765 226  
www.acowexel.com.au  
sales@acoaus.com.au

#### ACO Limited, New Zealand

Ph: 0800 448 080  
www.acowexel.co.nz  
sales@aconz.co.nz